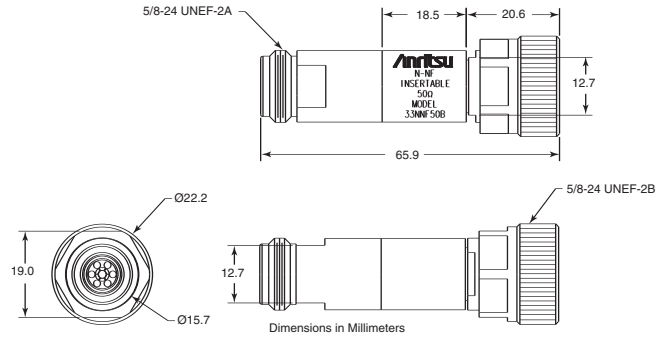
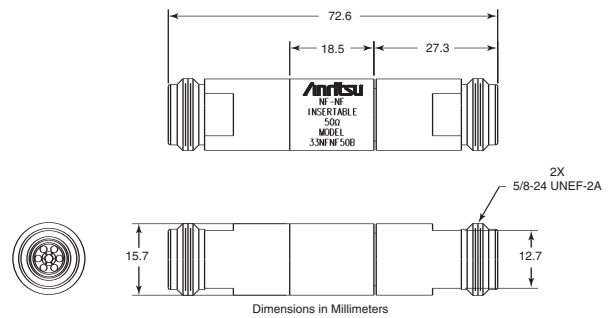


# CALIBRATION GRADE ADAPTERS

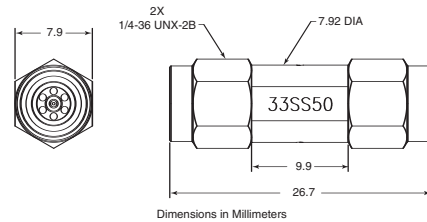
## 33 Series DC to 110 GHz



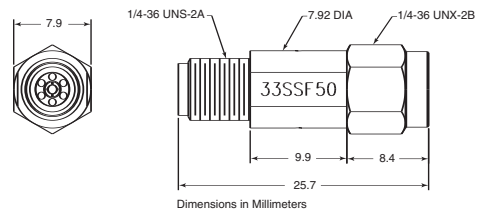
33NNF50B outline



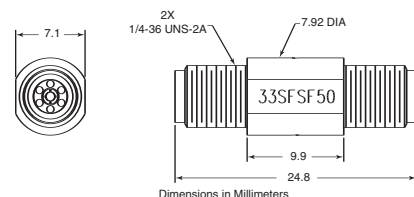
33NFF50B outline



33SS50 outline



33SSF50 outline

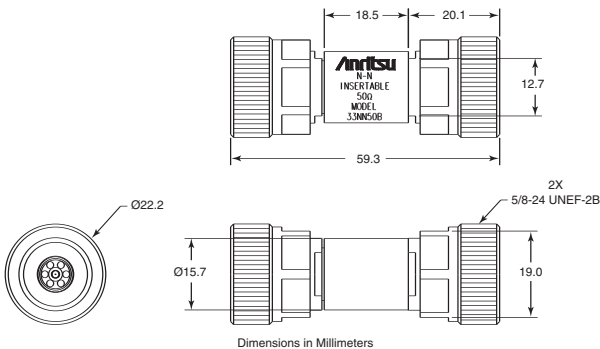


33SFSF50 outline

The 33 Series of precision phase equal adapters enable accurate measurements with Anritsu V Connector®, K Connector®, W1 Connector®, WSMA, and Type N interfaces. Every adapter is fully specified and 100% tested to ensure low reflections and optimum phase performance over a broad frequency range.

### Features

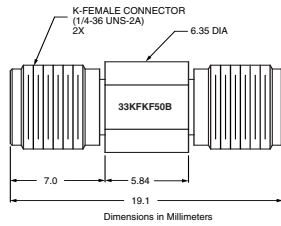
- Low SWR and insertion loss
- DC to 110 GHz, with W1 Connector® interface
- DC to 70 GHz, with V Connector® interface
- DC to 40 GHz, with K Connector® interface
- 50 Ω impedance



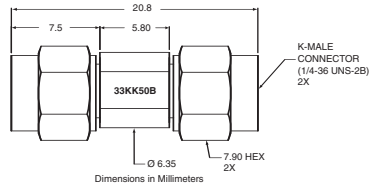
33NN50B outline

# CALIBRATION GRADE ADAPTERS

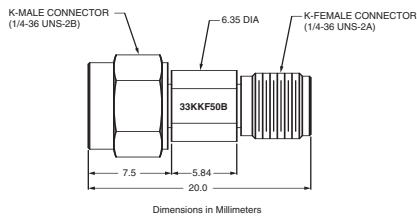
33 Series DC to 110 GHz



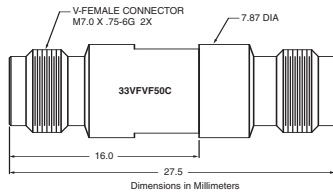
33KFKF50B outline



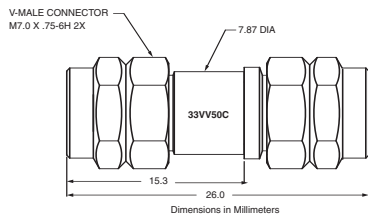
33KK50B outline



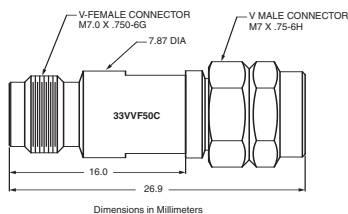
33KKF50B outline



33VVF50C outline



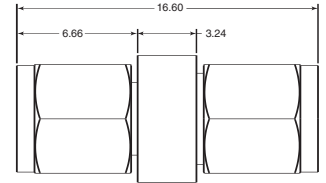
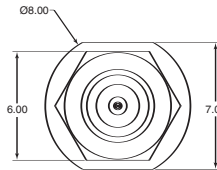
33VV50C outline



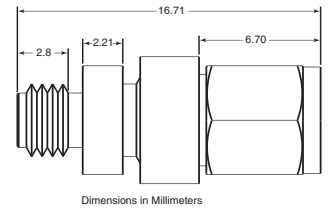
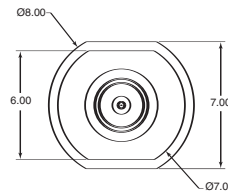
33VVF50C outline



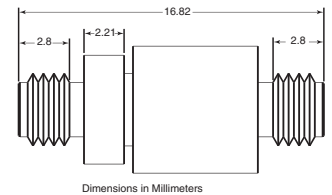
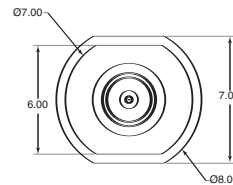
**33WW50**  
Precision W1 Male to W1 Male Adapter,  
DC to 110 GHz



**33WWF50**  
Precision W1 Male to W1 Female Adapter,  
DC to 110 GHz



**33WFW50**  
Precision W1 Female to W1 Female Adapter,  
DC to 110 GHz



# CALIBRATION GRADE ADAPTERS

33 Series DC to 110 GHz

## Specifications

Model	Frequency range (GHz)	Impedance ( $\Omega$ )	Connectors	SWR
33NN50B	DC to 18	50	N(m)-N(m)	1.09
33NNF50B	DC to 18	50	N(m)-N(f)	1.09
33NFN50B	DC to 18	50	N(f)-N(f)	1.09
33SS50	DC to 26.5	50	WSMA(m)-WSMA(m)	1.08 to 18 GHz 1.12 to 26.5 GHz
33SSF50	DC to 26.5	50	WSMA(m)-WSMA(f)	1.08 to 18 GHz 1.12 to 26.5 GHz
33SFSF50	DC to 26.5	50	WSMA(f)-WSMA(f)	1.08 to 18 GHz 1.12 to 26.5 GHz
33KK50B	DC to 40	50	K(m)-K(m)	1.1
33KKF50B	DC to 40	50	K(m)-K(f)	1.1
33KFK50B	DC to 40	50	K(f)-K(f)	1.1
33VV50C	DC to 70	50	V(m)-V(m)	1.33
33VVF50C	DC to 70	50	V(m)-V(f)	1.33
33VVF50C	DC to 70	50	V(f)-V(f)	1.33
33WW50	DC to 110	50	W1(m)-W1(m)	1.17 to 40 GHz 1.29 to 65 GHz 1.38 to 110 GHz
33WWF50	DC to 110	50	W1(m)-W1(f)	1.17 to 40 GHz 1.29 to 65 GHz 1.38 to 110 GHz
33WVWF50	DC to 110	50	W1(f)-W1(f)	1.17 to 40 GHz 1.29 to 65 GHz 1.38 to 110 GHz

Temperature range: -55°C to +125°C

## Electrical Length

Series	Inch	cm	picosecond
33N	2.292	5.822	194.06
33S	0.855	2.172	72.39
33K	0.623	1.582	52.75
33V B/C	0.930	2.362	78.74

## Ordering information

Please specify model/order number, name and quantity when ordering.

Model/Order No.	Name
	<b>Calibration grade adapter</b>
33NN50B	DC to 18 GHz, 50 $\Omega$ , N(m)-N(m)
33NNF50B	DC to 18 GHz, 50 $\Omega$ , N(m)-N(f)
33NFN50B	DC to 18 GHz, 50 $\Omega$ , N(f)-N(f)
33SS50	DC to 26.5 GHz, 50 $\Omega$ , WSMA(m)-WSMA(m)
33SSF50	DC to 26.5 GHz, 50 $\Omega$ , WSMA(m)-WSMA(f)
33SFSF50	DC to 26.5 GHz, 50 $\Omega$ , WSMA(f)-WSMA(f)
33KFK50B	DC to 40 GHz, 50 $\Omega$ , K(f)-K(f)
33KK50B	DC to 40 GHz, 50 $\Omega$ , K(m)-K(m)
33KKF50B	DC to 40 GHz, 50 $\Omega$ , K(m)-K(f)
33VVF50C	DC to 70 GHz, 50 $\Omega$ , V(f)-V(f)
33VV50C	DC to 70 GHz, 50 $\Omega$ , V(m)-V(m)
33VVF50C	DC to 70 GHz, 50 $\Omega$ , V(m)-V(f)
33WW50	DC to 110 GHz, 50 $\Omega$ , W1(m)-W1(m)
33WWF50	DC to 110 GHz, 50 $\Omega$ , W1(m)-W1(f)
33WVWF50	DC to 110 GHz, 50 $\Omega$ , W1(f)-W1(f)